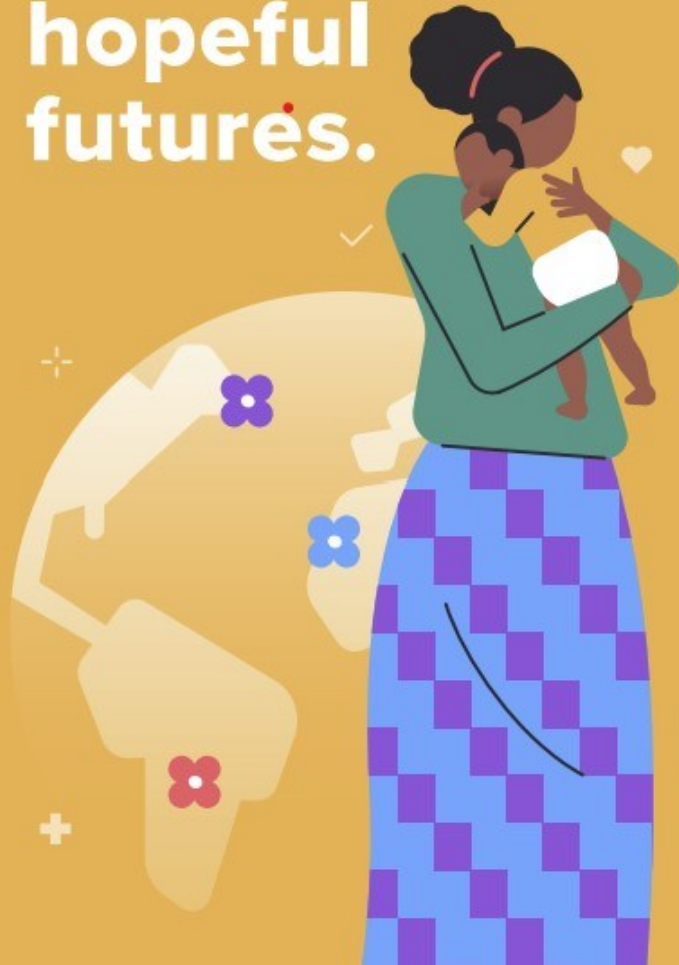


World Health Day 2025

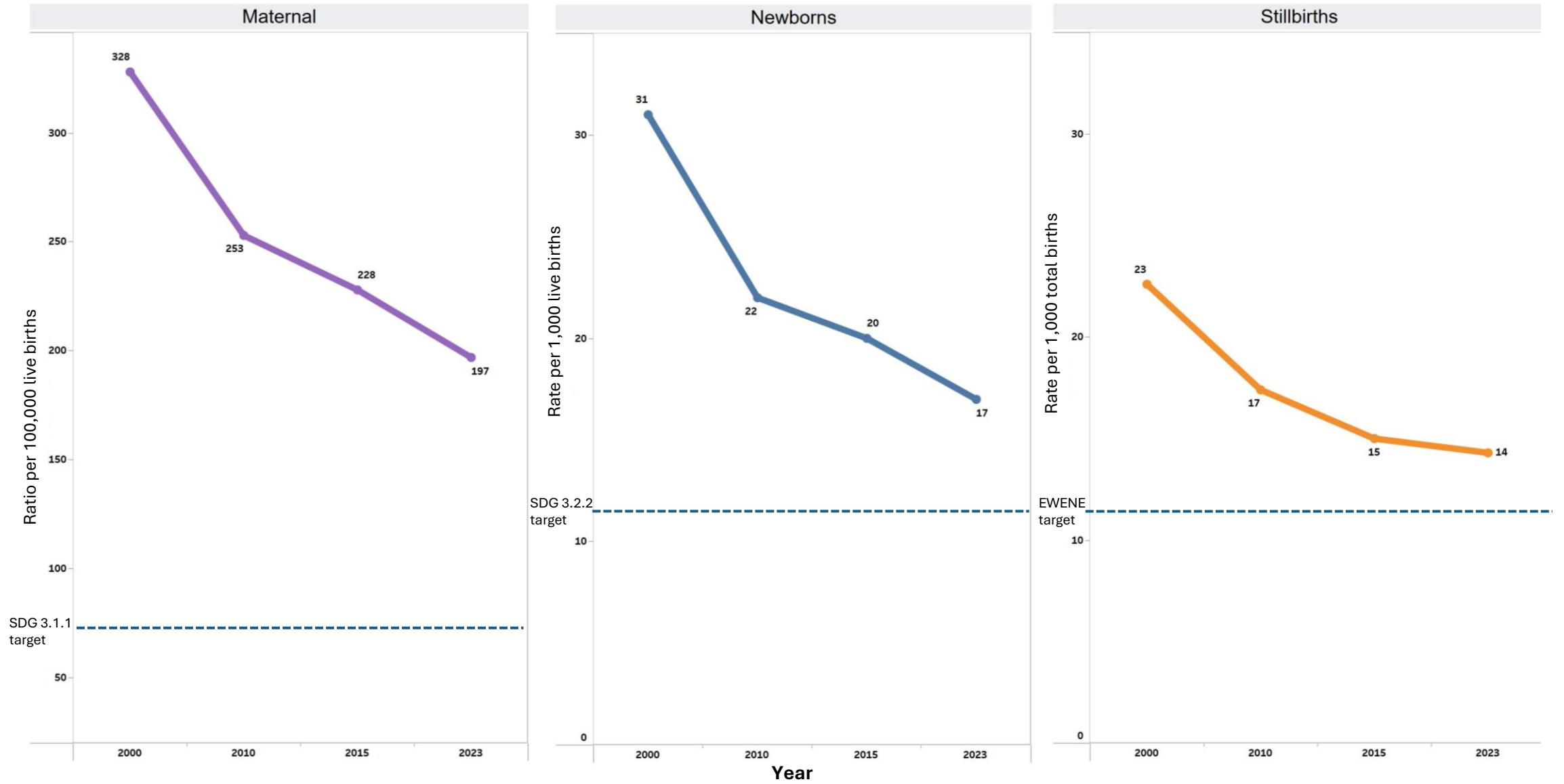
Healthy
beginnings,
**hopeful
futures.**



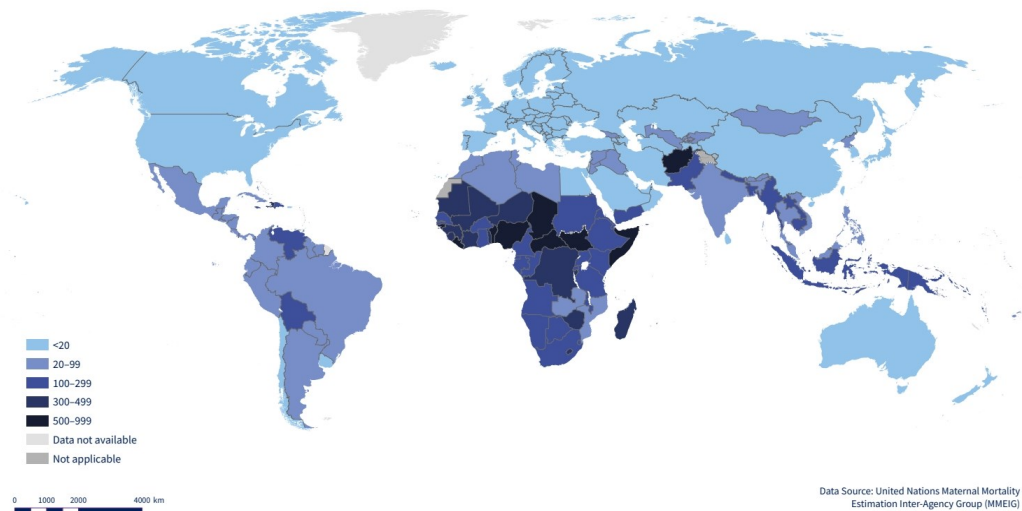
Maternal, Newborn Mortality and Stillbirths
Taking stock of Progress

Dr. Queen Dube
Medical Officer, World Health Organization

Global maternal mortality ratio, newborn and stillbirth rates, 2000-2023



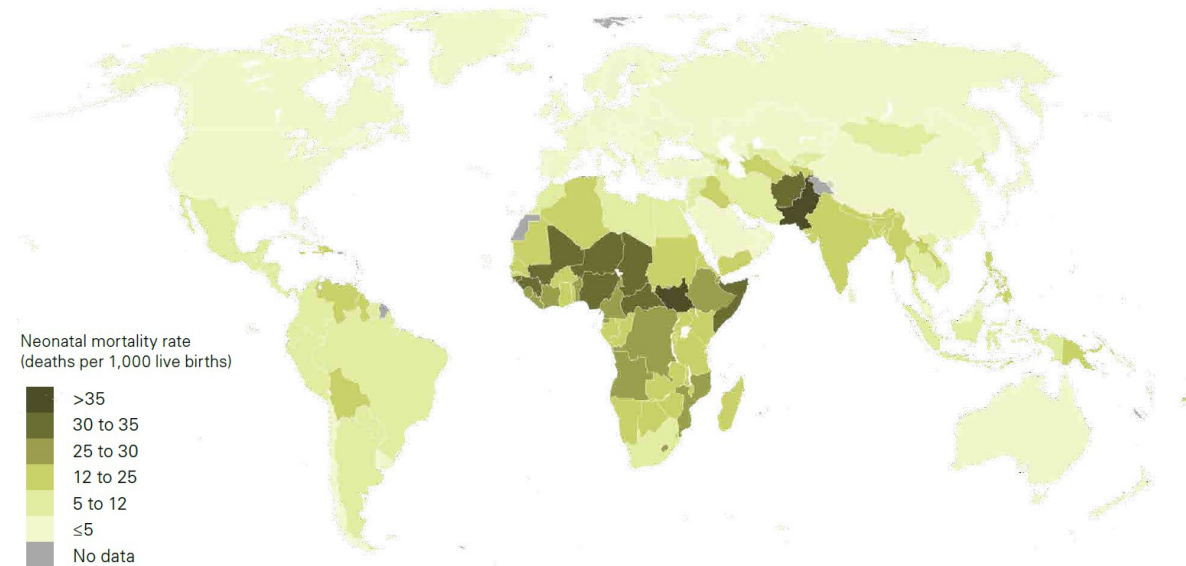
Maternal mortality



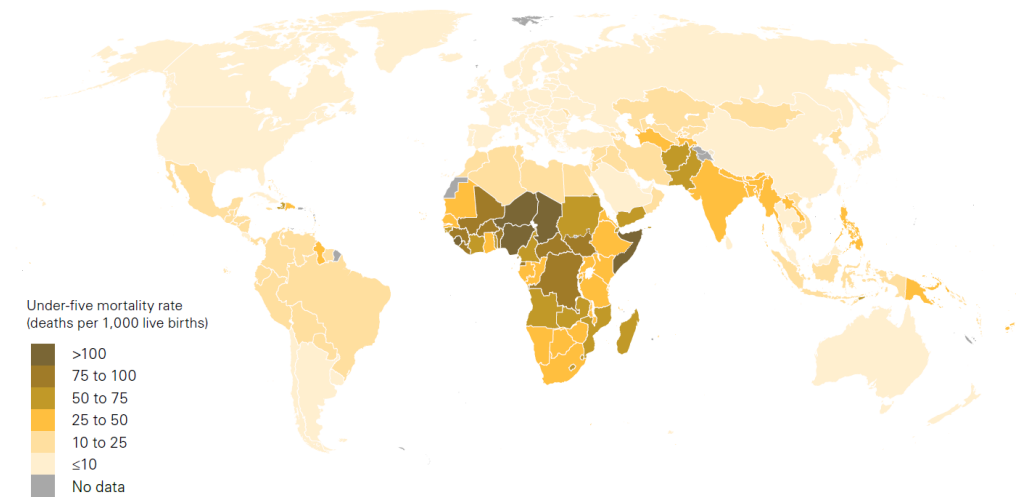
Data Source: United Nations Maternal Mortality Estimation Inter-Agency Group (MMEIG)
 Map Creation Date: 11 March 2025
 Map Production: WHO GIS Centre for Health, DNA/ODI
 © WHO 2025. All rights reserved.

The designations employed and the presentation of the material in this publication do not imply the expression of any opinion whatsoever on the part of WHO concerning the legal status of any country, territory, city or area or of its authorities, or concerning the delimitation of its frontiers or boundaries. Dotted and dashed lines on maps represent approximate border lines for which there may not yet be full agreement.

Neonatal mortality

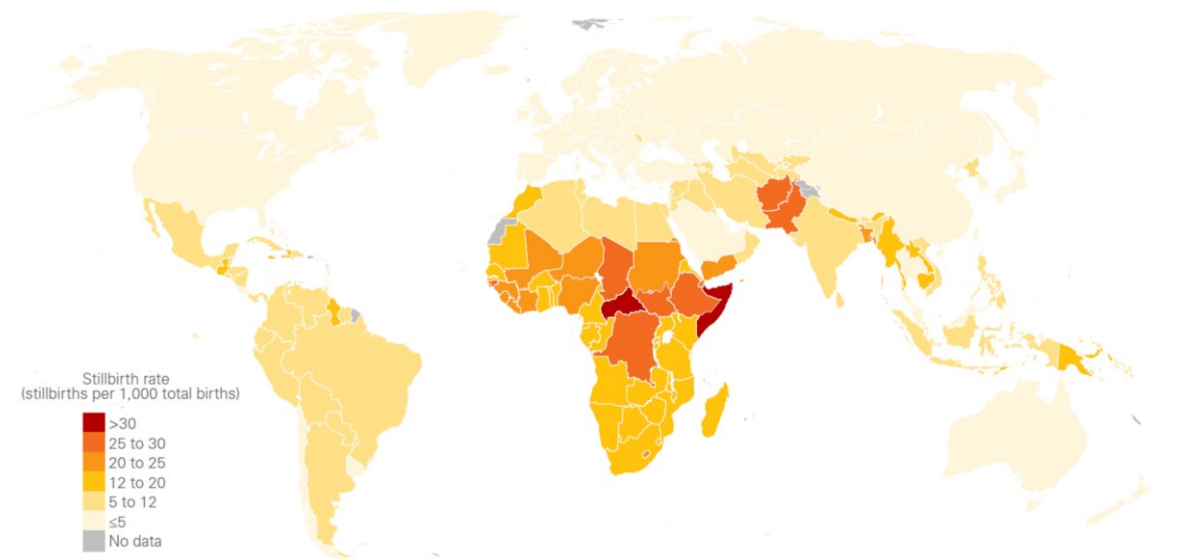


Child mortality



Note: Categories are based on unrounded numbers; value ranges are greater than the lower bound number and less than or equal to the upper bound number. This map does not reflect a position by UN IGME agencies on the legal status of any country or territory or the delimitation of any frontiers.

Stillbirths



Coverage Targets TOGETHER(Mother Baby Dyad)

= 3 million lives saved

90%

Every pregnant woman

Antenatal Care



Antenatal care
(syphilis testing, BP monitoring etc)

90%

Every birth

Skilled attendant at birth



Intrapartum care
(Monitoring is crucial)

80%

Every Woman and newborn

Early postnatal care



Postnatal care and Essential Newborn Care

80%

Availability of emergency care and equity

Access to emergency obstetric care and availability of SSNUs



Emergency care for woman and newborn

Faster progress requires:

Access

+

Quality

=

Impact